

# EXTEND THE POWER AND REACH OF BIGFIX WITH INTEL VPRO®

---

Quick Start Guide





Extend the Power and Reach of BigFix\* with Intel vPro®

Quick Start Guide

#### Notices & Disclaimers

Intel technologies may require enabled hardware, software or service activation.

No product or component can be absolutely secure.

Your costs and results may vary.

© Intel Corporation. Intel, the Intel logo, and other Intel marks are trademarks of Intel Corporation or its subsidiaries. Other names and brands may be claimed as the property of others.

Rev 1.2

8-1-2021

# Extend the Power and Reach of BigFix\* with Intel vPro® Quickstart Guide

## Contents

Description .....	2
Pre-requisites .....	3
Getting Started.....	3
Discovery.....	4
Unprovision.....	4
Install Intel EMA Agents.....	4
Release the Right-Click Integration Fixlet .....	5
Manual / “Do it Yourself” (DIY) .....	5
Templates.....	5
Configure Endpoint Groups.....	7
Configure Intel EMA Agent Fixlets .....	7

## Description

This package is intended to extend the power and reach of the BigFix\* Lifecycle environment by enabling BigFix\* customers to incorporate the Intel® Endpoint Management Assistant (Intel® EMA) and take full advantage of the hardware-level manageability included with Intel vPro® systems with Intel® Active Management Technology (Intel® AMT). The bundle contains XML files combining Windows PowerShell\*, JSON, and BigFix\* relevance scripts in the form of importable Fixlets and Retrieved Properties for use with the BigFix\* Lifecycle environment.

More information on Intel vPRO manageability is available in the [solution brief](#).

Intel® Endpoint Management Assistant is available for [download here](#).

A tool for automated setup of Intel EMA in Microsoft Azure\* for evaluation environments can be [initiated here](#). (Cloud service charges will apply)

Once this package is installed you will be able to:

- Discover which endpoints in your enterprise are equipped with Intel vPRO® technology
- Discover which endpoints have sufficiently recent (supported) versions of Intel® AMT firmware
- Determine if endpoints have been configured by another management console
- Unconfigure Intel AMT if previously provisioned
- Ensure the Intel Management Engine(ME) driver and Local Management Service (LMS) are installed and active
- Deploy the Intel® EMA Agent

# Extend the Power and Reach of BigFix\* with Intel vPro®

## Quickstart Guide

- Enable a right-click menu in the BigFix\* console to link to the endpoint in Intel EMA

### Pre-requisites

BigFix\* Lifecycle is installed in your environment and the BigFix\* agent is fully deployed, and you have a master operator account.

Intel® EMA is installed and configured (See EMA manual) and is ready to manage endpoints.

Intel EMA Quick-Start Guide:

<https://www.intel.com/content/dam/support/us/en/documents/software/manageabilityproducts/intel-ema-quickstart-guide.pdf>

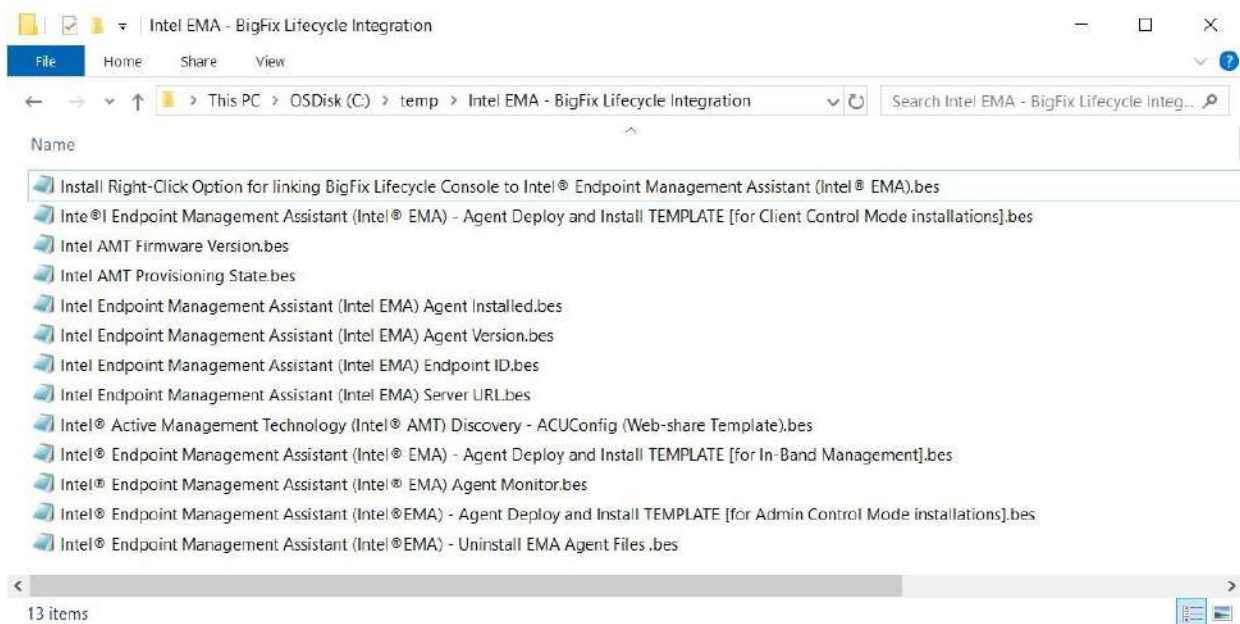
### Getting Started

#### Download the Integration Package

[https://downloadcenter.intel.com/download/29797/Intel-Endpoint-Management-Assistant-Intel-EMABigFix\\*-Lifecycle-Integration](https://downloadcenter.intel.com/download/29797/Intel-Endpoint-Management-Assistant-Intel-EMABigFix*-Lifecycle-Integration)

Expand and save the contents to a temporary folder on your BigFix\* Console server

In the BigFix\* Console, select [File] -> [Import] and add the .bes files



# Extend the Power and Reach of BigFix\* with Intel vPro®

## Quickstart Guide

### Discovery

Run the “Intel® AMT Discovery - Intel Endpoint Management Assistant Configuration Tool (ECT)” Fixlet.

This Fixlet will download and run the Intel® EMA Config Tool on each selected endpoint. The config tool will interrogate the PC for configuration and status details of Intel AMT and store the results in the Windows registry. These keys are used by the retrieved properties contained in the integration package.

### Unprovision

Some endpoints may be previously provisioned to legacy management consoles. If this is the case, and the endpoint firmware version meet the minimum supported requirements for Intel EMA, run the “Intel® AMT Unconfigure - Intel® System Configuration Software (SCS) Configurator Tool (ACUConfig)” Fixlet.

This Fixlet will download, install, and run the Intel SCS Configurator tool on each targeted endpoint with the “unprovision” switch. This will reset the Intel® Management Engine BIOS Extensions (Intel® MEBX) in most cases. A restart or a manual intervention may be required depending on the original provisioning method used.

**CAUTION:** Endpoints already provisioned to your Intel EMA environment WILL BE RELEVANT for this Fixlet. The Fixlet cannot discriminate between systems provisioned to current and legacy environments. ONLY DEPLOY THIS FIXLET TO ENDPOINTS THAT YOU WISH TO UNPROVISION.

### Install Intel EMA Agents

Open the Fixlet “Configure Intel® AMT on Windows endpoints for use with Intel® Endpoint Management Assistant.” Complete the form for the Intel EMA Server info in the Description tab.

▼ Intel EMA Server Info	
Parameter name	Parameter value
*Tenant Admin User Name:	<input type="text"/>
*Tenant Admin Password:	<input type="text"/>
*Verify Password:	<input type="text"/>
*EMA FQDN:	<input type="text"/>
*Endpoint Group:	<input type="text"/>

These parameters will be sent securely to the endpoint via BigFix\* mailboxing. A Windows PowerShell script will be created on the endpoint that when run, the endpoint will call the API on the Intel EMA server and install the agent and policy files provided.

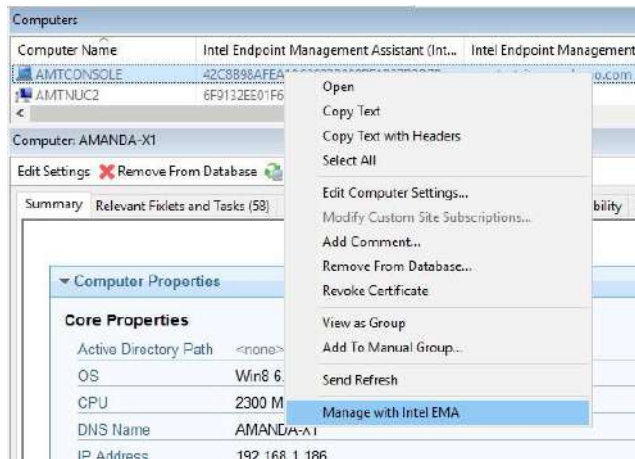


# Extend the Power and Reach of BigFix\* with Intel vPro®

## Quickstart Guide

**LIMITATION:** BigFix\* mailboxing operations cannot be dynamically targeted on an ongoing basis. You may deploy by relevance, property, or static list, but newly relevant systems will need to be targeted with additional actions going forward.

### Release the Right-Click Integration Fixlet



Run the “Install Right-Click Option for linking BigFix\* Lifecycle Console to Intel® Endpoint Management Assistant (Intel® EMA)” Fixlet against the BigFix\* console hosts. This is a peruser configuration so it will need to be allowed to run for each administrator carrying both roles. This will use the Retrieved Property data to construct a right-click option to jump from the BigFix\* Console to the Intel EMA Console.

## Manual / “Do it Yourself” (DIY)

### Templates

This package also contains templates for the DIY-minded BigFix Administrator. All of these are labelled with the word “TEMPLATE” in the name, and will require manual editing as per the instructions in the description tab.

The following instructions assume that the administrator has the following resources

- Fully configured instances of Intel EMA and BigFix\* Lifecycle
- An internal (or secure cloud) web-share – or ability to create one
- BigFix\* Custom Content training

Download and Install the Intel® Setup and Configuration Software “Configurator” Package.

# Extend the Power and Reach of BigFix\* with Intel vPro® Quickstart Guide

Click the [Download] button here: <https://downloadcenter.intel.com/download/30340/Intel-Configurator>

Configurator\_download\_package\_12

Windows 8.1\*  
Windows 7\*  
Windows Server 2016\*  
Windows Server 2012 R2\*  
Windows Server 2012\*  
Language: English  
Size: 16.62 MB  
MD5: c0c451d4e584d6e4435c2a44d3dbf3

Download

I accept the terms in the license agreement

Expand the .zip file and run the **ACUConfigInstaller.msi** found in the Configurator sub-folder.

Intel(R) SCS ACUConfig 12.2.0.139 Setup Wizard

Welcome to the Intel(R) SCS ACUConfig 12.2.0.139 Setup Wizard

The Setup Wizard will install Intel(R) SCS ACUConfig 12.2.0.139 on your computer. Click Next to continue or Cancel to exit the Setup Wizard.

Back Next Cancel

Intel(R) SCS ACUConfig 12.2.0.139 Setup

End-User License Agreement

Please read the following license agreement carefully

Intel® Setup and Configuration Software ("Intel® SCS")  
LIMITED LICENSE AGREEMENT

- (Original Equipment Manufacturer ("OEM") / Original Design Manufacturer ("ODM") / Independent Hardware Vendor ("IHV") / Independent Software Vendor ("ISV") / IT Outsourcer ("ITO") / System Integrator ("SI") Distribution)

IMPORTANT - THIS IS A CONTRACT. PLEASE READ CAREFULLY BEFORE DOWNLOADING, INSTALLING, ACCESSING, COPYING, OR OTHERWISE USING THE SOFTWARE.

I accept the terms in the License Agreement

Print Back Next Cancel

Intel(R) SCS ACUConfig 12.2.0.139 Setup

Destination Folder

Click Next to install to the default folder or click Change to choose another.

Install Intel(R) SCS ACUConfig 12.2.0.139 to:

C:\Program Files (x86)\Intel\SCS ACUConfig\

Change...

Back Next Cancel

Intel(R) SCS ACUConfig 12.2.0.139 Setup

Ready to install Intel(R) SCS ACUConfig 12.2.0.139

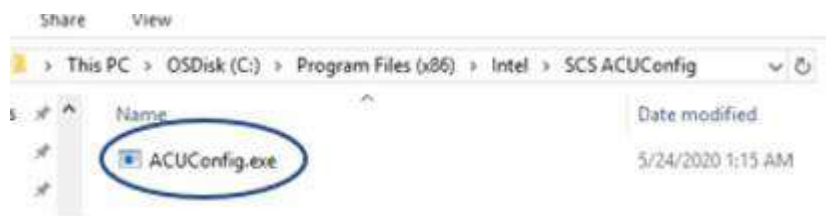
Click Install to begin the installation. Click Back to review or change any of your installation settings. Click Cancel to exit the wizard.

Back Install Cancel

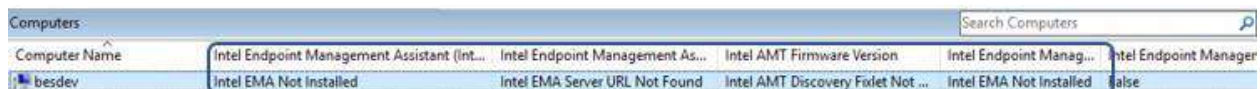
Navigate to the installation folder and copy ACUConfig.exe to a web-shareable location in your enterprise.

# Extend the Power and Reach of BigFix\* with Intel vPro®

## Quickstart Guide



Configure TEMPLATE Fixlets as directed in the description starting with “Intel® Active Management Technology (Intel® AMT) Discovery - ACUConfig (Web-share Template)” Once this Fixlet is configured and run, the imported Retrieved Properties will begin to populate:



Computer Name	Intel Endpoint Management Assistant (Int...	Intel Endpoint Management As...	Intel AMT Firmware Version	Intel Endpoint Manag...	Intel Endpoint Manag...
besdev	Intel EMA Not Installed	Intel EMA Server URL Not Found	Intel AMT Discovery Fixlet Not ...	Intel EMA Not Installed	false

These properties will gather the same data whether the discovery is run via the Intel EMA Config Tool (Automated Fixlet) or the ACUConfig Tool (manual).

**Intel EMA Server URL information will populate once the Intel EMA Agent installation Fixlet is deployed.**

### Configure Endpoint Groups

In the Intel EMA console, configure your endpoint groups and generate agents. Copy the agent and policy files to a web-share.

See Intel EMA documentation for instructions to generate agent and policy files

### Configure Intel EMA Agent Fixlets

Configure and release the Intel EMA Agent deployment Fixlets as applicable.

See Fixlet description and/or the Intel® Endpoint Management Assistant – BigFix\*® Lifecycle Integration Guide” included with the integration package, for instructions.



# THANK YOU



[www.2ts.co.za](http://www.2ts.co.za)

+27 12 021 0103

Co-Work at Midstream, Midlands  
Office Park West, Mount Quray  
Road, Midstream  
Gauteng  
1692